

Leon Medical



Datasheet

chairium

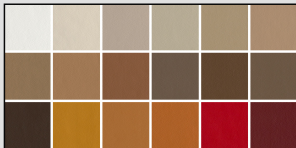
Datasheet



Cabled
Control



As Chairium, we are pleased to manufacture "TV Chairs, Relaxation & home theater seats" for our customers who care about design and comfort. With the advantage of being a manufacturer of home cinema & theater seats, we can customize all our seats according to the wishes of our customers.

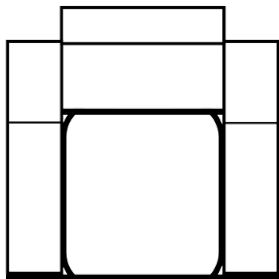


Fabric : Available
Artificial Leather : Available
Genuine Leather : Ask us!

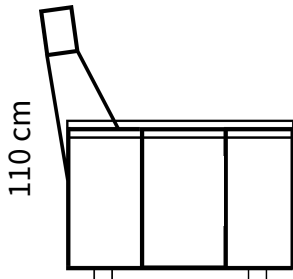


The Leon model has two motors and elevator mechanism. It reclines with the wired control. With 4 separate keys on the control, the foot part can move separately and the back part can move separately. In addition, it provides ease of life for the patient and elderly with the ability to raise the sitting person to feet. It has the ability to recline at 180 degrees. Optional massage system can be applied.

chairium



85 cm



110 cm

90 cm



IMPORTANT NOTE: Our recliner models can be produced according to desired dimensions. In shared armrest seating arrangements, the total width may vary depending on the connection type of the armrests. Contact us for detailed information.



001 White

005 Ivory

042 Sand

007 Light Beige

028 Beige

027 Java

062 Desert

306 Caramel

317 Croquant

068 Taupe

360 Latte

310 Mocha

370 Bitter

303 Mustard

308 Camel

257 Taba

260 Red

275 Cherry

430 Army

460 Grass

480 Petrol

525 Navy Blue

006 Mink

602 Pearly Grey

606 Silver Grey

625 Dark Grey

901 Black

chairium

* **Contact us for high quality images.**
* **Artificial Leather Colors**

*All details in the datasheets are for informational purposes only. Get detailed information from the export specialist before ordering.